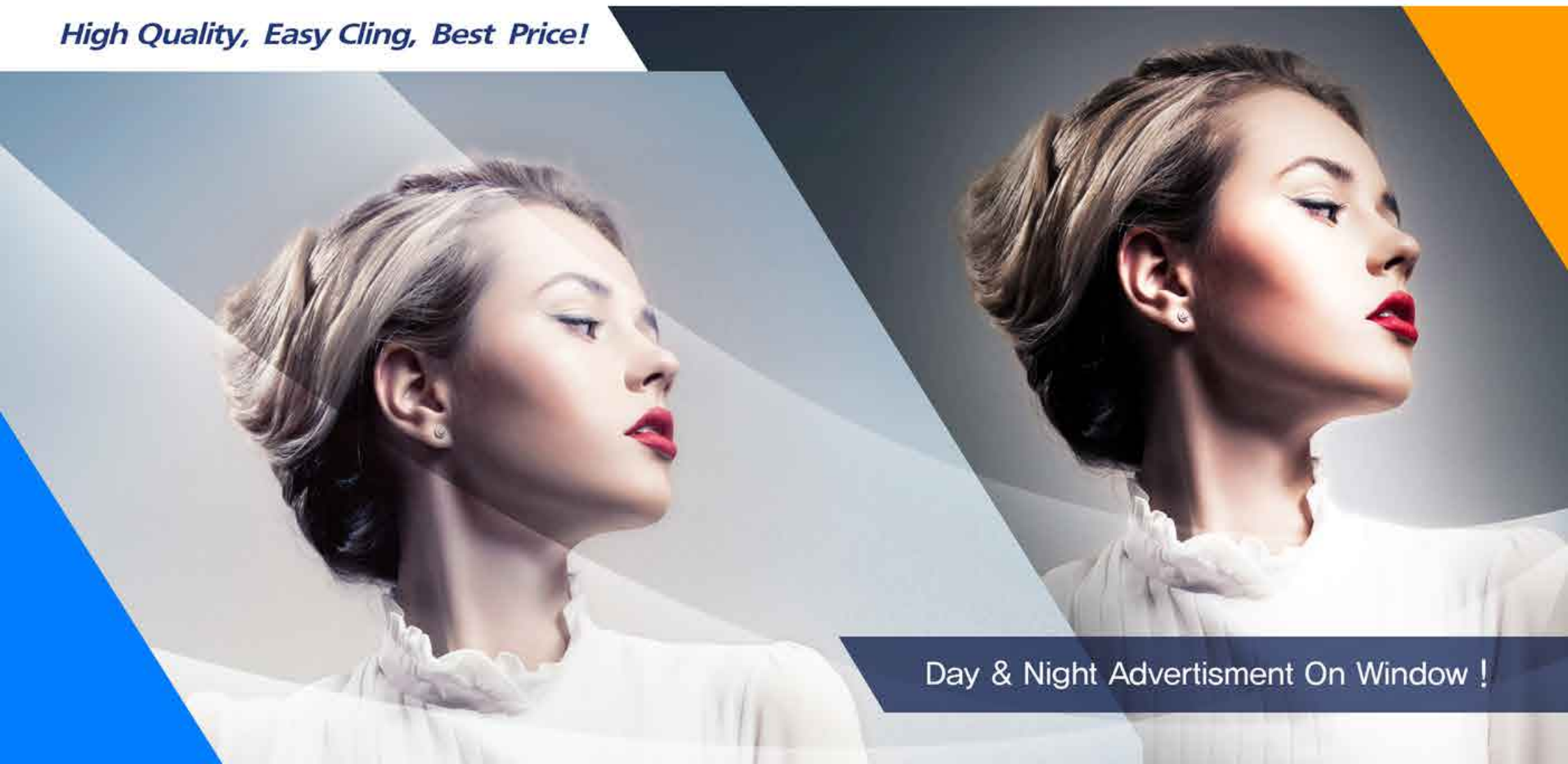




*The world 1st development !
Patented products !
PCT/KR2015/010485*

Reverse Vision™

High Quality, Easy Cling, Best Price!



Day & Night Advertisement On Window !

AWARD



The world
1st development !
Patented products !
PCT/KR2015/010485

The award by product of 2016 SGIA Las Vegas
The award for product of the year competition
Johns Media's **Reverse Vision** was chosen !



2016 Product of the Year

1. CONCEPT



The world 1st development !
Patented products !
PCT/KR2015/010485

What is the *Reverse Vision*™

It is the Reverse printable **backlit film** with removable adhesive for **window application**.

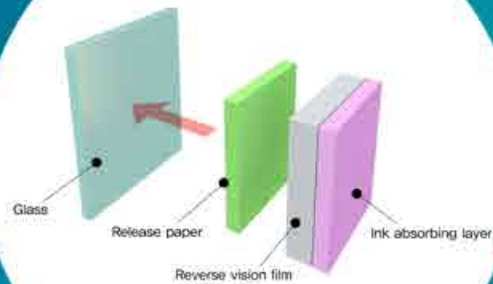
SPECIFICATION

Code	URV90	ERVR110
Name	UV Reverse Vision 90	Eco – sol Reverse Vision R 110
Base material	Polyester	Polyester
Total Thicknss	90μm	140μm
Total Weight	190g/m ²	190g/m ²
Surface	Semi Matte	Semi Matte
Ink Compatibility	UV, Latex	Eco Solvent, UV, Latex
Adhesive	Removable	Acrylic Removal
Core	3"	3"
Width	36", 54", 60"	36", 54", 60"
Length	30m, 50m, 100m	30m, 50m, 100m

Reverse printable backlit film For window graphic

For Eco Solvent, UV & Latex Ink Print. / Day & Night Advertisment On Window !

2. STRUCTURE

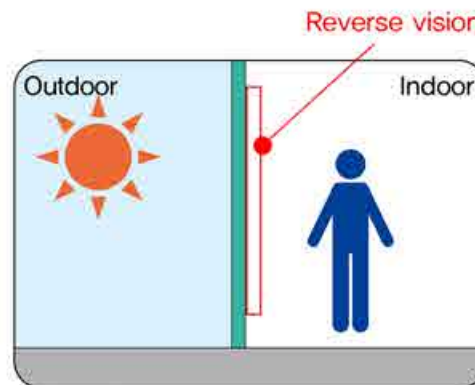


Day & Night Advertisement On Window !



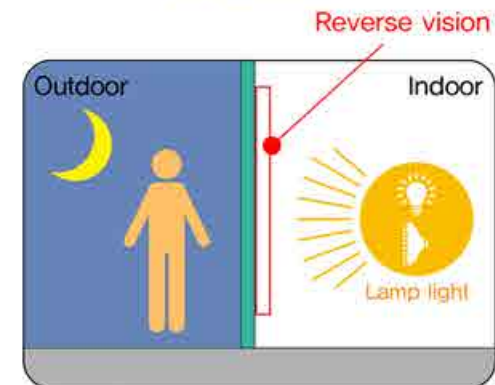
DAY

With sun light, the image on Reverse vision becomes vivid brilliantly during the day. The customers in the shop can see the advertisement on window like ads on backlit



NIGHT

With indoor lamp light, the image on Reverse vision becomes vivid brilliantly during night. The customers who pass by the shop can see the advertisement on window like backlit ads.



Reverse Vision is window graphic film which can maximize advertising effect by expressing Backlit effect by indoor lights in the night and also printed advertisement and images can be installed at the window inside of a building. It expresses bright and vivid image by light diffusion effect of the film. It is easy to attach and detach. There is no residue when removing the film. It is patented products which can be installed at windows with no sky crane by installing inside

3. FEATURE

Reverse Vision™

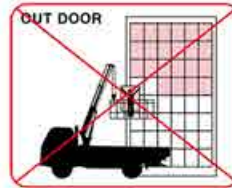
1	Specially designed Backlit film	Light diffusion effect → To make image brighter and more vivid
2	Reverse printing is available	Installing inside for outdoor advertisement → To display longer Same image advertisement from inside & outside
3	Better image	Strong visibility than clear film, Brighter image ads than PP/PVC
4	Based on premium polyester film	Lay flat, No shrinkage
5	Use Latex & UV printer	Higher durability from the ink & special coating layer → No over lamination necessary
6	Premium adhesion for windows	Easy to install, No specialist necessary for small size ads
7	Easy Installation	No residue bafter removing the image from the window Save cost, save time, Ensure safety



3. FEATURE

Reverse Vision™

Installation of other companies' window film



Not required sky crane

Installation of Reverse Vision™



Easy installation in the room regardless weather conditions



▲ No residue



▲ Less bleaching and damage from the outside



▲ Backlit effect with indoor lights in the night.

4. APPLICATION

Reverse Vision™



▲ Outdoor – Backlit effect with indoor lights

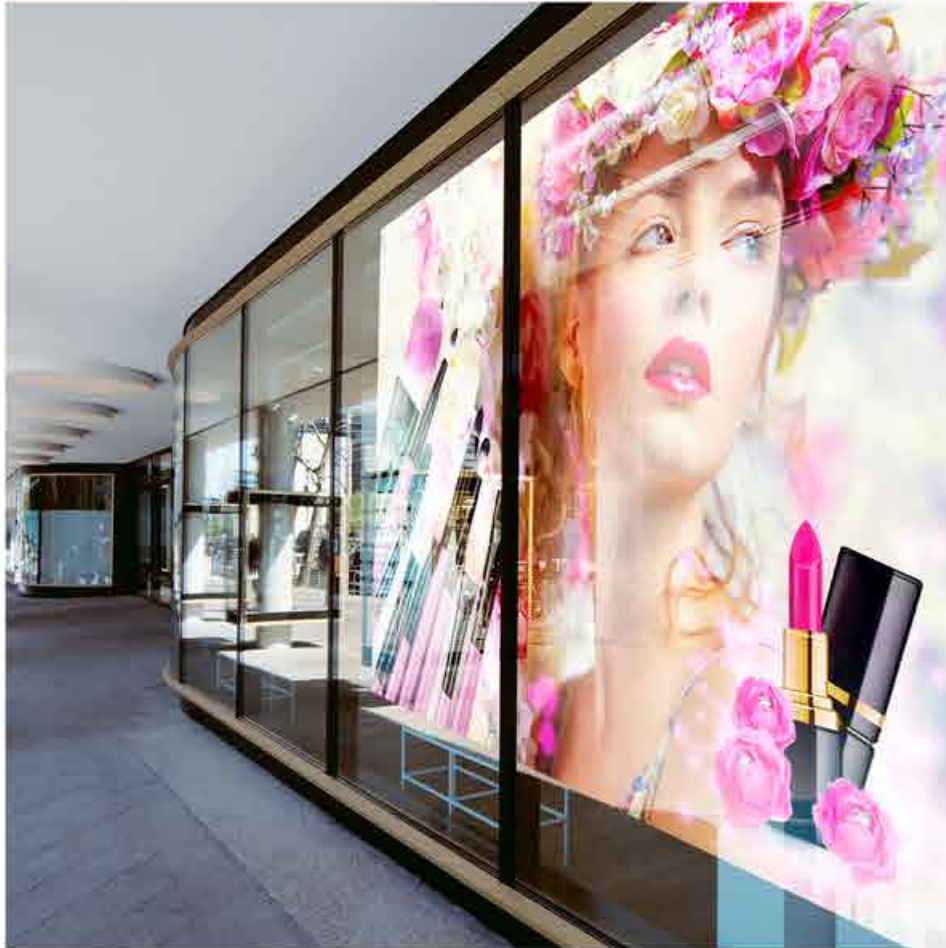


▲ Indoor – Installation inside of a building.

Advertising effect both indoor and outdoor

4. APPLICATION

Reverse Vision[™]



▲ Day – Installation example of Reverse Vision inside of the window.



▲ Night – Get advertising impact with backlit effect with indoor lights

4. APPLICATION

Reverse Vision™



▲ Making meaningless window as meaningful spaces with backlit advertisement



▲ Indoor lighting effects change the design of the building



▲ Making meaningless window as meaningful spaces with backlit advertisement



▲ Advertisement on big window area

4. APPLICATION

*Reverse Vision*TM



Road shop,
Eye catching advertisement !



A leading advanced media company
Johns Media Co., Ltd.



Johns Media Co., Ltd.
14, Junggado-gil, Gunsan-si, Jeollabuk-do, Korea
TEL. +82-63-461-6281 FAX. +82-63-471-6281
www.johnsmedia.co.kr

