

The new **VersaUV** LEF-300 flatbed printer

VersaUV LEF Technology Just Got

**Bigger and
More Productive
than Ever**


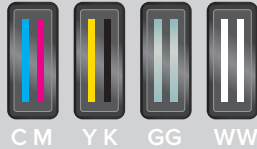
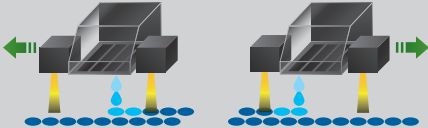
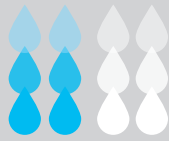



 **Roland**[®]

The LEF-300 is the latest and greatest of Roland DG's VersaUV LEF series of flatbed printers. With the same brilliant color and direct printing capabilities on three-dimensional items, the LEF-300 now enables higher quantity and larger item printing. Featuring a 30" print width, four print heads and two UV-LED lamps for faster curing, the LEF-300 significantly increases productivity and delivers stunning results.

Power-Up Your Workflow

The LEF-300 offers a host of productivity features, including:

<p>Expanded print area 30" wide by 13" long</p>  <p>LEF-20 print area</p> <p>LEF-300 print area</p>	<p>Four print heads increase production speed and offer bidirectional printing – approximately 1.6 times faster than previous models when in CMYK mode</p>  <p>4-print heads</p> <p>CM YK GG WW</p>
<p>Two UV-LED lamps – one of which moves – ensure instant curing of inks</p>  <p>LEF-300 enables bidirectional printing with UV-LED lamps on both sides of the print head</p>	<p>White and clear (gloss) ink are circulated through two rows of nozzles for fast, multi-layer printing with increased density and opacity</p>  <p>New draft print mode for users in need of quick prototype prints</p> 

Built to Meet High-Volume Demand

The extended 30"x13" print bed of the LEF-300 allows for production of higher quantities of items. In order to maintain high-quality printing, even during long production runs, the LEF-300 incorporates industrial parts that are not susceptible to changes in temperature or humidity. To meet the needs of high-volume production and manufacturing facilities, the LEF-300 also includes input/output system allowing control of external devices.

Achieve High-Quality Results on a Wide Range of Materials

The LEF-300 can print on objects up to 3.94" in height, including a wide variety of substrates like PET, ABS, polycarbonate, and soft materials such as TPU and leather. With the LEF-300, you can print on three-dimensional items such as pens, smartphone cases, signs, awards, giftware, promotional items and more – the possibilities are virtually endless.

Advanced ECO-UV Inks for Outstanding Results

Designed for flexibility, ECO-UV inks image beautifully and conform around the most complex corners and curves, allowing users to customize everything from gifts and novelties to industrial parts and product prototypes. ECO-UV ink options include high-density white ink for greater brilliance on clear or dark-colored materials and clear ink for gloss and matte finishes. Multiple layers of clear ink can be applied to simulate embossing and 3D textures.

Roland VersaWorks Dual, Advanced Intuitive RIP Software Included

Roland VersaWorks Dual RIP software includes all the advanced and ease-of-use features of VersaWorks, and now supports both PostScript and native PDF files – including files with transparencies – for improved file processing, plus automatic creation of white and clear ink effects. In addition, features like offset, positioning, rotation, registration of additional ink layers and texture effects can be handled directly in the RIP without the need to return to design software.



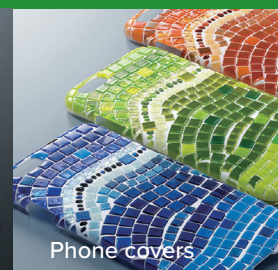
Introducing your very own IMAGE FACTORY



Membrane panels



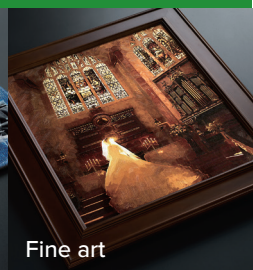
Promotional products



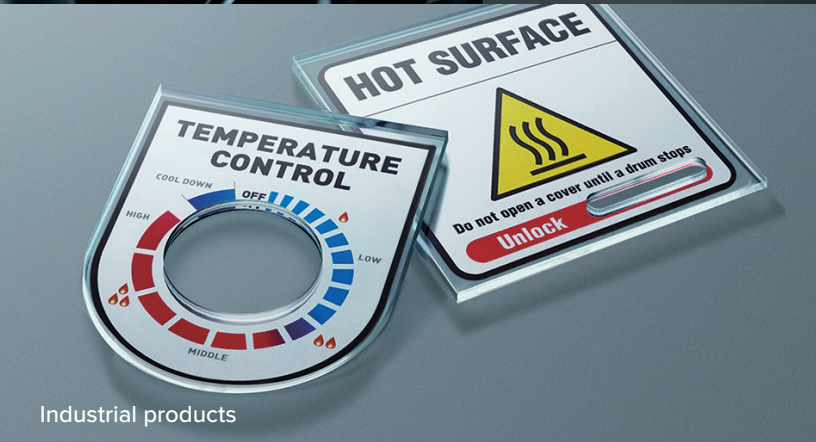
Phone covers



Technology accessories



Fine art



Industrial products



Unique and customized products

Number of days required for production of 1,000 smartphone cases*

LEF-300 1.8 days

LEF-20 4.2 days

* When printing 8 hours a day, CMYK+Wh,
for 5.59" x 1.65" size smartphone cases

LEF-300 Throughput

CMYK

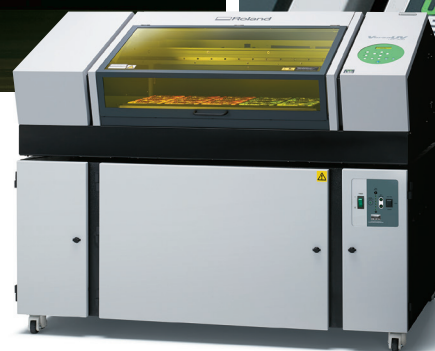
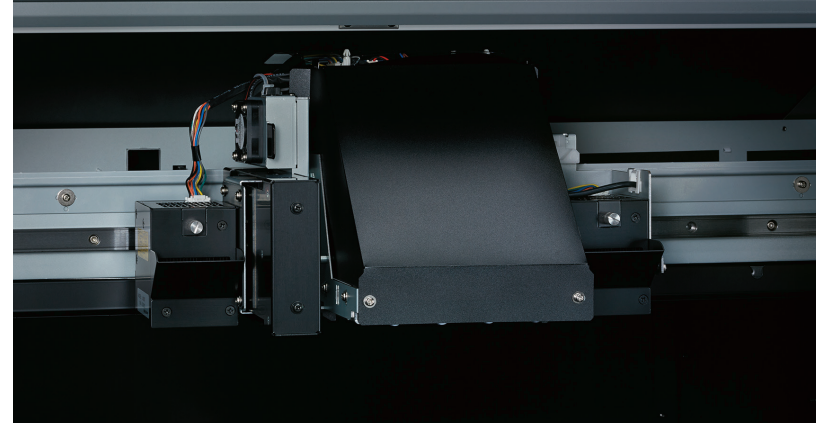
High Quality: 14.96 sqft/hr
Standard: 24.32 sqft/hr

White

High Quality: 11.51 sqft/hr
Standard: 4.32 sqft/hr

Clear

Gloss Varnish: 13.56 sqft/hr
Matte Varnish: 23.57 sqft/hr



Highlights & Specifications

- Expansive 30" x 13" (770 x 330 mm) print area for handling larger substrates and higher quantities
- Print on a wide variety of objects up to 3.94" in height
- Fast and versatile printing with four print heads and two energy-efficient UV-LED lamps
- 6-Color ECO-UV inks in CMYK, White and Clear for special effects
- White and Clear (gloss) ink circulate through two rows of nozzles each for fast, multi-layer printing
- Print speed = 14.96 sqft/hr (1.39 m²/hr) in CMYK standard mode
- Side location of ink cartridges allows ink replacement without having to open the cover
- Dust-prevention cover for airtight enclosure and UV containment
- Comes with new Roland VersaWorks Dual RIP software for out-of-the-box productivity
- BOFA Air Filtration Unit included with purchase of LEF-300 to ensure proper ventilation and for use as a machine stand

For detailed features and specifications, visit www.rolanddga.com/lef300.



Get social with us.



Imagine. **Roland**